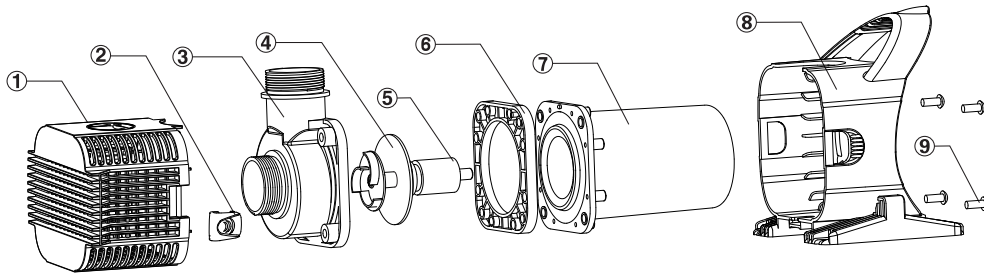


WARRANTY

24-MONTH LIMITED WARRANTY

All PondBuilder™ IllumiFlow pumps are warranted to the user against defective material and workmanship under normal use for a period of 24 months from the date of purchase by the original purchaser (Provided that your pump was registered within 60 days of purchase). Replacement liability in all events is limited to replacing or repairing at PondBuilder™'s sole discretion of any part or parts which are defective in material or workmanship. Proof of purchase is required on all claims in the form of invoice copy, sales ticket, etc. Warranty void if pump is not installed as per these instructions. All pumps returned will be inspected to determine cause of failure before warranty approval.

The warranty and remedy described in this limited warranty is an EXCLUSIVE warranty and remedy IN LIEU of any other warranty or remedy, expressed or implied, which other warranties and remedies are hereby expressly EXCLUDED, including but not limited to any implied warranty of MERCHANTABILITY or FITNESS for a PARTICULAR PURPOSE. This warranty gives buyer and use specific legal rights, and buyer and user may also have other rights which vary from state to state. Some states do not allow the exclusion or limitation of incidental or consequential damages, so the above limitation or exclusion may not apply to you.



- ① Water Inlet Cover
- ② Clip
- ③ Water Chamber
- ④ Impeller is suitable for particles

- ⑤ Stainless steel rotor
- ⑥ Fixing Board
- ⑦ Main Housing
- ⑧ Handle
- ⑨ Screw

FOR YOUR RECORDS

Please keep receipt in case of warranty service

Date of Purchase _____

Model number _____

Serial Number _____

Dealers stamp _____

PONDBUILDER™
5359 N. Michigan Rd.
Saginaw, MI 48604
Phone: 989.755.3364
www.pondbuilder.com



PONDBUILDER

Manufacturers of Quality Pond Equipment & Supplies

OWNER'S MANUAL



Models

IllumiFlow 2100
IllumiFlow 3200
IllumiFlow 4500
IllumiFlow 6000
IllumiFlow 7800



Congratulations!

You have purchased a quality pump from PondBuilder, manufacturers of quality pond products. **If you experience trouble with your pump please reference the Troubleshooting section of this manual.** If you are unable to remedy the problem please contact your local PondBuilder dealer for further assistance.



IMPORTANT PLEASE READ BEFORE USING YOUR PUMP

To insure proper operation of your pump and receive maximum life of this product, it is important that you read the owners manual completely.

PondBuilder™ PUMP INFORMATION

PondBuilder™ products are created by experienced pond professionals. These multi-purpose submersible pumps are designed for use in water garden and koi pond filtration systems, and to create waterfalls, streams and water features. They can also be used for other drainage applications, such as draining swimming pools, and clearing water from a flooded basement.

IllumiFlow models are suitable for pumping clear filtered water, such as when using a PondBuilder™ Pond Skimmer. The temperature of the water being pumped must never exceed 95 degrees Fahrenheit. **Do not pump salty water, sewage, inflammable, corrosive or explosive liquids (e.g. petrol, fuel, diluents), greases, oils, or foodstuffs.**

For Your Safety



The power cord must never be used to carry or move the pump. Always use the pump's handle.



The pump should be unplugged before taking any action on the pump including placing it into or removing it from the water.



Never remove the plug from the power socket by pulling on the power cord.



If the power supply cord has been damaged, it must be replaced by the manufacturer or his authorized customer support service in order to avoid all risks.

Installing the pump

- These pumps can be installed in a pond skimmer or directly into a pond in either a vertical or horizontal position.
- The pump must remain submersed while running. Running the pump dry will void the warranty.
- Pump may also be installed in a non-submersed or external installation using a flooded-suction solution (not suction lift)
- Do not place the pump where it can become clogged with debris or gravel. Do not set the pump on the bottom of the pond to prevent the pump from draining the pond. Monitor the pump regularly to make sure the intake remains unclogged.
- Plug the pump into a ground fault interrupter (GFCI) protected outlet that is in a dry place, protected against any risk of flooding. Verify that the power supply voltage and frequency match the specifications on the pump nameplate.

DO NOT cut the cord and direct wire the pump for any reason. Doing so will void the warranty.

Winter Operation

The pump may be run during cold weather, but it is absolutely essential to prevent the pump housing and PVC pipe from freezing. In the event ice may freeze around the pump, remove the pump from the water, empty it and place it where it cannot freeze.

Overload Protection

The pump has a thermal overload safety device. In the event of any overheating of the motor, this device automatically switches off the pump. The cooling time is roughly 15 to 20 minutes, then the pump automatically comes on again. If the overload cutout is tripped, it is essential to identify and deal with the cause of the overheating.

6. TROUBLESHOOTING



Before taking any troubleshooting action, disconnect the pump from the power supply by removing the plug from the socket.

Problem	Possible causes	Solutions
The pump does not run.	<ul style="list-style-type: none"> • Power cord unplugged. • Impeller jammed. 	<ul style="list-style-type: none"> • Plug cord securely into the socket and check if there is voltage on the line. • Disconnect the power cord, disassemble hydraulic part and check if impeller is free to run. • Check to see if the circuit protector needs to be reset.
The pump runs but does not deliver water.	<ul style="list-style-type: none"> • Water level under the suction minimum. • Air bubble in the pump, produced during the plunge. • Suction filter clogged. • Discharge tube clogged or obstructed. 	<ul style="list-style-type: none"> • Stop the pump, do not run the pump dry. • Get the air out by plunging again the pump while in a tilted position and shake it with the discharge tube open. • Disconnect the power cord, clean the pump bottom. • Disconnect the power cord: take off the tube and clean it.
The pump stops running automatically.	The thermal overload protection system stopped the pump. A foreign object has jammed the pump. The pump was used in hot water. The pump ran dry.	Disconnect the power cord, correct the reason for overheating; then wait until the pump is cooled, plug the cord and resume operation.

PondBuilder Pump Specifications

Model	Max Flow Rate	Max Height	Watts	Amps	Flow Rate @ 5'	Flow Rate @ 10'
IllumiFlow 2100	2100 gph	12.5 ft	86	0.75	1780 gph	1100 gph
IllumiFlow 3200	3200 gph	14.5 ft	168	1.44	2860 gph	2080 gph
IllumiFlow 4500	4500 gph	21 ft	270	2.28	4100 gph	3360 gph
IllumiFlow 6000	6000 gph	28.5 ft	521	4.55	5250 gph	4700 gph
IllumiFlow 7800	7800 gph	27.5 ft	607	5.28	6480 gph	5725 gph

* Wattage will vary based on head pressure.