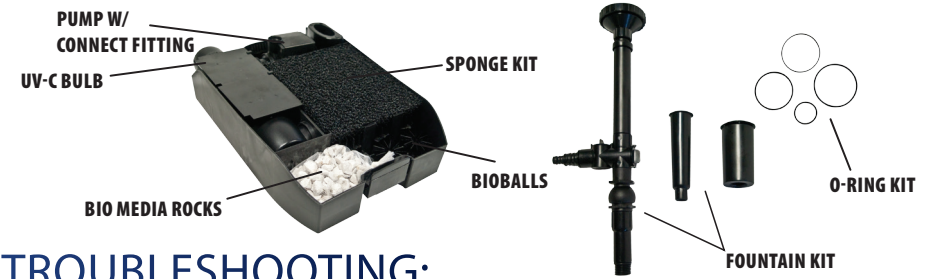


REPLACEMENT PARTS:

MODEL	UV-C BULB 9 - WATT	SPONGE KIT	BIO MEDIA ROCKS	UV HOUSING W/ QUARTZ SLEEVE	O-RING KIT	FOUNTAIN KIT	CONNECT FITTING	PUMP W/ CONNECT FITTING
ClearSolution™ 1200	#110306	#120822	#120826	#120836	#120984	#120823	#120827	#120821



TROUBLESHOOTING:

*Note: For your safety the UV transformer must be connected to the UV housing in order for the UV to operate.

If water is not clear, check the following:

- Check the viewing window to ensure the UV bulb is lit.
- Replace UV bulb if it has not been replaced in the past year, even if it is lit.
- Check that the quartz sleeve is clean.
- Verify that the proper amount of water is flowing through the UV. See recommendation for proper water flow under Technical Specs.

Loss of water flow, check the following:

- Verify pump and filter intake is not plugged with debris.
- Verify the filter sponges, bio media rocks, bio balls and or UV is not plugged with debris.

PRODUCT WARRANTY:

All ClearSolution™ Filters carry a 3-year warranty. The Pond Guy® will repair or replace any units found to be defective. This limited warranty is extended exclusively to the original purchaser and begins from the date of original purchase receipt. The UV bulb, filter sponges, bio media rocks, o-rings and fitting set are wearable items and are not covered by this warranty. Abuse or misuse of this product or power cord alterations void all warranty. Please call for a Return Authorization Number prior to returning product by calling our Customer Care Department at 866-766-3435. Failure to request an RMA number may result in delay or dismissal of your warranty claim.

THANK YOU FOR CHOOSING:

The Pond Guy® Inc.
We Know Ponds™
15425 Chets Way
Armada, MI 48005

866-POND-HELP (766-3435)
thepondguy.com

View other great products on-line at www.thepondguy.com



ClearSolution™
4-In-1 UV Pond
Filtration System
Installation Manual

For Model:

- ClearSolution™
(Item #120800)

Table of Contents:

Important Information..... 2
Package Contents..... 3
Technical Specs..... 3
Installing Your ClearSolution™ Filter 4-5
Maintaining Your ClearSolution™ Filter 6-7
Replacement Parts 8
Troubleshooting..... 8
Warranty Information..... 8



IMPORTANT INFORMATION:

Please read these instructions thoroughly before use. Failure to follow instructions may result in equipment damage or failure, losses, injury or death.

⚠️ DANGER: ⚠️

To avoid possible electric shock:

- If the power cord has been damaged DO NOT operate, the ClearSolution™ Filter should be replaced.
- Prior to installation, inspect the quartz sleeve and UV-C bulb to ensure there was no damage during transportation.
- Close supervision is necessary when the unit is used by or near children.

⚠️ WARNING: ⚠️

To reduce the risk of electric shock:

- Connect only to a properly grounded receptacle, which is serviced by a Ground Fault Circuit Interrupter and never remove the ground pin from the plug.
- Provide a “drip loop” for the power cord. This is a loop in the cord below the level of the receptacle or plug that prevents water from traveling along the cord in the direction of the receptacle.
- ALWAYS unplug the ClearSolution™ Filter from power source when it is not in use, and before installing, removing or servicing the ClearSolution™ Filter components.
- If an extension cord is necessary, a cord with a proper rating should be used. A cord may overheat if the cord is rated for less amperes or watts than the unit rating.
- DO NOT immerse the ClearSolution™ Filter plug in water or attempt to use a wet plug.
- The ClearSolution™ Filter is NOT suitable for use in swimming pools, swimming ponds, or other situations where bodily contact is made with the water.

Avoid contact with the UV-C light. Light omitted can be harmful to the eyes and skin.

⚠️ CAUTION: ⚠️

To reduce the risk of equipment damage or failure:

- ALWAYS keep the ClearSolution™ Filter completely submerged during operation for proper cooling.
- DO NOT place ClearSolution™ Filter near flammable or other dangerous materials or objects.
- ALWAYS unplug the unit if there is no water running through it to prevent over heating.
- DO NOT operate during freezing conditions. Drain the ClearSolution™ Filter and store in a protected location.
- DO NOT operate the ClearSolution™ Filter with a pump larger than the pump indicated by the unit specifications. Operating with a pump larger than recommended can reduce the UV's effectiveness or cause damage to the UV and filter and will NOT be covered under warranty.

IMPORTANT:

The Pond Guy® is not responsible for equipment damage or failure, losses, injury or death resulting from failure to follow safety precautions, misuse or abuse of equipment.

Package Contents
CLEARsolution™ FILTER



ClearSolution™ Filter

- A ClearSolution™ Filter
- B Fountain Fitting Set

TECHNICAL SPECS:

MODEL	POWER	UV WATTAGE	BARB FITTING	MAX FLOW RATE	MAX POND SIZE	POWER CORD LENGTH (UV & PUMP)
ClearSolution™ 1200	120V / 60 Hz	9 Watts	1/2", 3/4"	520 GPH	1,200 Gallons	16'

INSTALLING YOUR CLEARSOLUTION™ FILTER:

For Best Results

- Run the ClearSolution™ Filter 24 hours a day.
- DO NOT operate during freezing conditions. Drain the ClearSolution™ Filter and store in a protected area.



Watch a video of the ClearSolution™ Filter installation online @ www.thepondguy.com/clearsolution



Step 1 Assemble Plumbing Adaptors

ASSEMBLE the components in order:

Fountain Option: male to female adaptor, pivot fitting, diverter valve and telescoping pole.

Waterfall or Spitter Option: male to female adaptor, pivot fitting, diverter valve and 1/2" to 3/4" barb fitting.



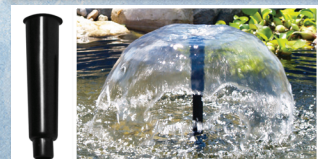
Step 2 Connect Plumbing Assembly to the Filter

SCREW the assembly onto the ClearSolution™ Filter. If you are using only the waterfall or spitter option, connect plumbing to the barb fitting and proceed to Step 4.



Step 3 (Fountain Option Only) Install a Fountain Spray Nozzle

INSTALL the spray nozzle by pressing it firmly onto the telescoping pole.



Bell Pattern (13"H x 15"W)



Geyser Pattern (11"H x 6"W)



Tri-Tier Pattern
(1st Tier 18"H x 26"W, 2nd Tier 32"H x 32"W, geyser 42" H)



Step 4 Place Filter in Pond

PLACE the filter on a flat surface towards the middle of your pond. The fountain head must remain above the water's surface.



Step 5 Plug in the Unit

PLUG the UV power cord into the transformer.



Plug the UV and pump power cords into a standard 120V GFCI outlet.



Step 6 Adjust the Water Flow

ADJUST the angle of the fountain spray by pivoting the fountain assembly. Adjust the spray height or the water flow to a waterfall or feature by opening or closing the diverter valve.



MAINTAINING YOUR CLEARSOLUTION™:



WARNING:

Before performing any maintenance, always unplug the ClearSolution™ Filter from the power source.



Watch a video of the ClearSolution™ Filter maintenance online @ www.thepondguy.com/clearsolution

ANNUAL MAINTENANCE:

Maintenance should be performed at least once per season during fall shut-down or before installing the ClearSolution™ Filter in the spring. See REPLACEMENT PARTS for replacement quartz sleeve and housing, UV bulb, filter sponge pads and bio media rocks.

Step 1 Access the Filter



UNPLUG the filter and UV, disconnect the plumbing and remove the filter from the pond.



UNSCREW the diverter and fountain assembly from the filter.



UNLOCK and remove the intake cover to expose the filter media.

Tools Required:

- Soft Cloth
- 9W UV bulb
- Filter Sponge Pads
- Bio Media Rocks
- Descaler

Step 2 Clean the Filter



REMOVE and discard the old filter sponges and bio media rocks from the filter.*



LIFT to remove the UV cover and pull out the UV and pump.



RINSE heavy debris from the BioBalls Media and the filter unit.*

**For mid-season maintenance it is not necessary to replace filter media, gently rinse only heavy debris. Avoid using chlorinated tap water or detergents.*

Step 3 Clean the Pump



REMOVE the pump cap by twisting counter-clockwise to expose the impeller.



REMOVE the rubber impeller cap and gently remove the impeller.



CLEAN all parts with clean water. The use of a descaler is helpful for tough debris. Be sure to rinse thoroughly before placing back into the filter. **Continued on next page...**

Step 3 Clean the Pump Continued...



REASSEMBLE the pump by placing the impeller into the pump housing, pressing the rubber cap onto the impeller and securing the pump cap.



PLACE pump back into the filter unit.

Step 4 Clean the UV Clarifier



REMOVE the UV housing by unlatching the lock and separating the housing.



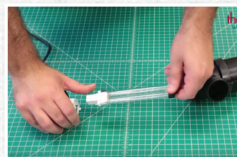
CLEAN the quartz sleeve using a soft cloth.



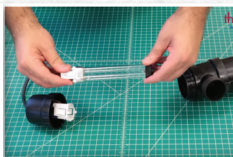
REASSEMBLE the UV housing and lock into place. Be sure o-ring is properly seated when reassembling.



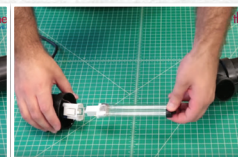
UNSCREW the transformer from the UV housing and pull to separate.



PULL gently at the base of the bulb to separate it from the UV transformer.



TRANSFER the rubber cap from the old UV bulb to the new one.



INSERT the new UV bulb. Avoid touching the bulb with bare hands as the oils from your skin can cause damage to the bulb.



SCREW the transformer securely back onto the UV housing. Be sure the o-ring is seated properly when reassembling.



PLUG the in the UV to test. The indicator light on the UV transformer will tell you if power is getting to the transformer. The view window on the UV housing will tell you if the UV bulb is working. Unplug the UV.



INSTALL UV back into the filter unit and place the UV cover back into place.

Step 5 Reassemble and Install the Filter



INSTALL new filter sponges and bio media rocks into the filter unit.



INSTALL the filter intake cover.



CONNECT diverter, fountain assembly and plumbing.



PLACE filter back into the pond. Plug in the pump and UV, and adjust fountain spray and diverter flow.