



ClearVac™

Dual-Chamber Pond Vacuum

Installation & Maintenance Manual

(Item # 160192)

3 Year Warranty



Table of Contents:

Important Information.....	2
Package Contents.....	3
Technical Specs.....	3
Assembly Instructions.....	4-5
Using Your ClearVac™ Vacuum.....	6
Maintenance, Storage & Troubleshooting.....	7
Replacement Parts.....	8
Warranty Information.....	8



IMPORTANT INFORMATION:

Please read these instructions thoroughly before use. Failure to follow instructions may result in equipment damage or failure, losses, injury or death.

DANGER:

To avoid possible electric shock:

- If the power cord has been damaged, DO NOT operate, the ClearVac™ Vacuum should be replaced.
- Prior to installation, inspect the ClearVac™ Vacuum to ensure there was no damage during transportation.
- If the ClearVac™ Vacuum falls into the water, DO NOT reach for it. First unplug and then retrieve it.
- Close supervision is necessary when used near children.

WARNING:

To reduce the risk of electric shock:

- Connect only to a properly grounded receptacle, which is serviced by a Ground Fault Circuit Interrupter and never remove the ground pin from the plug.
- Provide a “drip loop” for the power cord. This is a loop in the cord below the level of the receptacle or plug that prevents water from traveling along the cord in the direction of the receptacle.
- ALWAYS unplug the ClearVac™ Vacuum from the power source when it is not in use, and before installing, removing or servicing the ClearVac™ Vacuum components.
- If an extension cord is necessary, use only a 10 or 12 gauge outdoor rated extension cord no longer than 50 feet. A cord may overheat if the cord is rated for less amperes or watts than the unit rating.
- DO NOT immerse the ClearVac™ Vacuum or plug in water or attempt to use a wet plug.
- The ClearVac™ Vacuum is NOT suitable for use in swimming pools, swimming ponds, or other situations where bodily contact is made with the water. Although the ClearVac™ Vacuum is designed for outdoor use, it should never be submerged in water.

CAUTION:

To reduce the risk of equipment damage or failure:

- DO NOT place ClearVac™ Vacuum near flammable or other dangerous materials or objects.
- ClearVac™ Vacuum is NOT submersible; do not place ClearVac™ Vacuum where it might contact or fall into the water.
- DO NOT operate during freezing conditions. Drain the ClearVac™ Vacuum and store in a protected location.
- DO NOT use the ClearVac™ Vacuum to vacuum flammable, toxic or volatile substances.
- Be sure to clean debris from the vacuum after each use, and before storing the unit, to avoid poor performance during future use.

IMPORTANT:

The Pond Guy® is not responsible for equipment damage or failure, losses, injury or death resulting from failure to follow safety precautions, misuse or abuse of equipment.

Package Contents

CLEARVAC™:



ClearVac™

Note: Some of the components may be packaged inside the vacuum chamber

A 1 - ClearVac™ Vacuum	F 1 - 16' Suction Hose
B 4 - Suction Extension Tube (Black)	G 1 - 8' Discharge Hose
C 1 - Suction Extension Tube (Clear)	H 1 - Plug
D 4 - Interchangeable Nozzles (String Algae, Narrow, Wide & Adjustable Gravel Nozzles)	I 2 - Wheels
E 1 - Debris Bag	J 1 - Intake Distributor

TECHNICAL SPECS:

MODEL	VOLTS	MOTOR SIZE	MAX OPERATING DEPTH	POWER CORD LENGTH
ClearVac™	115V	1600 Watts	6'	13'

ASSEMBLY INSTRUCTIONS CLEARVAC™:



See video instructions of the ClearVac™ vacuum online @ www.thepondguy.com/clearvac



Step 1 Unlock the Chamber

Remove stored parts from the collection chamber by unlocking the vacuum chamber clamps and removing the top of the vacuum. Replace the vacuum top and lock the clamps back into place.



Step 2 Attach Wheels

Attach the wheels to the rear base of the ClearVac™.



Step 3 Attach Intake Distributor

Attach the intake distributor to the intake opening and twist to lock into position.



Step 4 Connect the Suction Hose

Connect the suction hose to the intake distributor.



Step 5 Connect the Discharge Hose

Connect the discharge hose to the drain opening located towards the bottom of the unit.



Step 6

Position the Discharge Hose

Lay the discharge hose so it lies flat and away from the pond. The discharge hose should always be lower than the discharge outlet hole for proper drainage. If desired, attach the debris bag to the end of the discharge hose by placing the end of the hose in the debris bag and tightening the drawstring.

Note:

The debris bag will collect only larger debris for disposal. We do not recommend returning water to the pond from the discharge hose, as it may result in cloudy water.



Step 7

Attach the Extension Tubes

Attach extension tubes to the suction hose. The clear extension tube will allow you to monitor the ClearVac™ performance.



Step 8

Choose a Nozzle

Attach one of the four interchangeable nozzles to the extension tube:

- String Algae Nozzle
- Narrow Nozzle for hard to reach places
- Adjustable Gravel Nozzle great for cleaning ponds with gravel bottoms
- Wide Nozzle for large areas



**String Algae
Nozzle**



**Narrow
Nozzle**



**Adjustable
Gravel
Nozzle**



**Wide
Nozzle**

USING THE CLEARVAC™ VACUUM:



Step 1

Position the Vacuum

Position the ClearVac™ near the ponds edge and plug into a GFCI outlet. The ClearVac™ can be used with an extension cord but it must be a 10 or 12 gauge outdoor rated extension cord no longer than 50’.



Step 2

Turn on the Vacuum

Turn the power switch to the “ON” position and submerge the end of the suction hose in the pond.



Step 3

Adjust the Suction

Using the vacuum level adjustment on the handle of the suction hose, slowly close the valve to increase the suction and lift unwanted debris.



Step 4

Vacuum Debris

Move in a slow, uniform fashion to remove sludge, debris and algae. When the reservoir becomes full, the ClearVac™ will automatically switch reservoirs and drain allowing for continuous vacuuming.



Step 5

Turn Off the Vacuum

When finished, turn the power switch to the “OFF” position and unplug the ClearVac™. Be sure to clean the unit after each use before storing.

MAINTENANCE:



WARNING:

Before performing any maintenance, always unplug the ClearVac™ from the power source.

- Clean the collection chamber, tubes and foam filters after operating and rinse with clean water.
- Check o-rings and foam filters for wear or damage and replace if needed.



STORAGE:

- The ClearVac™ hoses and extensions easily disassemble and can be stored right on the unit.
- The ClearVac™ includes a handle for easy mobility. Simply unthread the tension knob, adjust the handle and retighten.
- The ClearVac™ should be stored in a dry, temperature controlled room.



TROUBLESHOOTING:



WARNING:

For your protection, always unplug the ClearVac™ from your power source before servicing.

Little or no suction is produced:

- Be sure the ClearVac™ is positioned at or near water level.
- Remove and inspect the intake distributor, intake and suction hoses for obstructions.
- Reduce the number of extension tubes used
- Be sure the suction hose is lying as flat as possible with no kinks.
- Check to be sure that o-rings are installed properly.

Unit does not reach full capacity or collection chamber does not drain:

- Clean foam filters
- Remove and inspect the intake distributor, intake and suction hoses for obstructions.
- Check for kinks in discharge hose & always position the discharge hose lower than the discharge outlet.
- Check drain opening for blockages

Unit develops noise or heavy vibration:

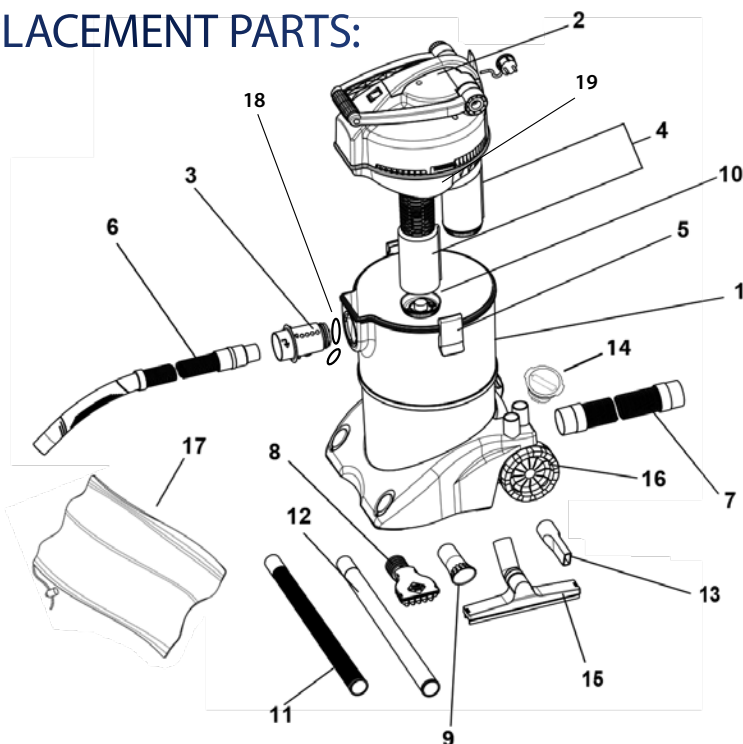
Turn the power switch off for 20 seconds and then restart the unit. If issue persists try the following:

- Make sure collection chamber is not full and that it is draining properly
- Clean foam filters
- Remove and inspect the intake distributor, intake and suction hoses for obstructions.

Vapor escapes from the unit:

- In cold weather, condensation forms in the unit and it released as water vapor. This is normal and no remedy is necessary.

REPLACEMENT PARTS:



NUMBER	NAME	SKU
1	Collection Chamber (discontinued)	
2	Handle	160241
3	Intake Distributer	160242
4	Filter Foam	160243
5	Clamp Replacement Kit	160244
6	Suction Hose – 16' x 1.5"	160246
7	Discharge Hose – 8'	160247
8	Gravel Nozzle	160248
9	String Algae Nozzle	160249
10	Filter Retainer Plate	160266

NUMBER	NAME	SKU
11	Suction Extension Tube (Black)	160267
12	Suction Extension Tube (Clear)	160268
13	Narrow Nozzle	160269
14	Replacement Plug	160278
15	Wide Nozzle	160271
16	Wheel	160272
17	Debris Bag	160273
18	Vacuum Seal Replacement Kit	160274
19	Vacuum Distributer Assembly	160275

WARRANTY:

All ClearVac™ Vacuums carry a 3-year warranty. The Pond Guy® will repair or replace any units found to be defective. This limited warranty is extended exclusively to the original purchaser and begins from the date of original purchase receipt. The filter foam and o-rings are wearable items and are not covered by this warranty. Abuse or misuse of this product, power cord alterations or use of an improper extension cord voids all warranty. Please call for a Return Authorization Number prior to returning product by calling our Customer Care Department at 866-766-3435. Failure to request an RMA number may result in delay or dismissal of your warranty claim.

THANK YOU FOR CHOOSING:

The Pond Guy® Inc.
 We Know Ponds™
 15425 Chets Way
 Armada, MI 48005

866-POND-HELP (766-3435)
 thepondguy.com